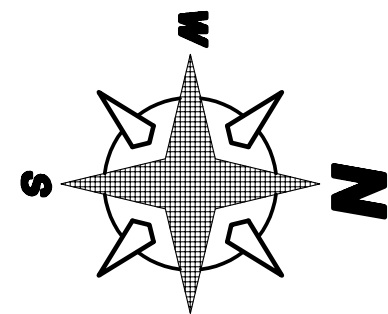


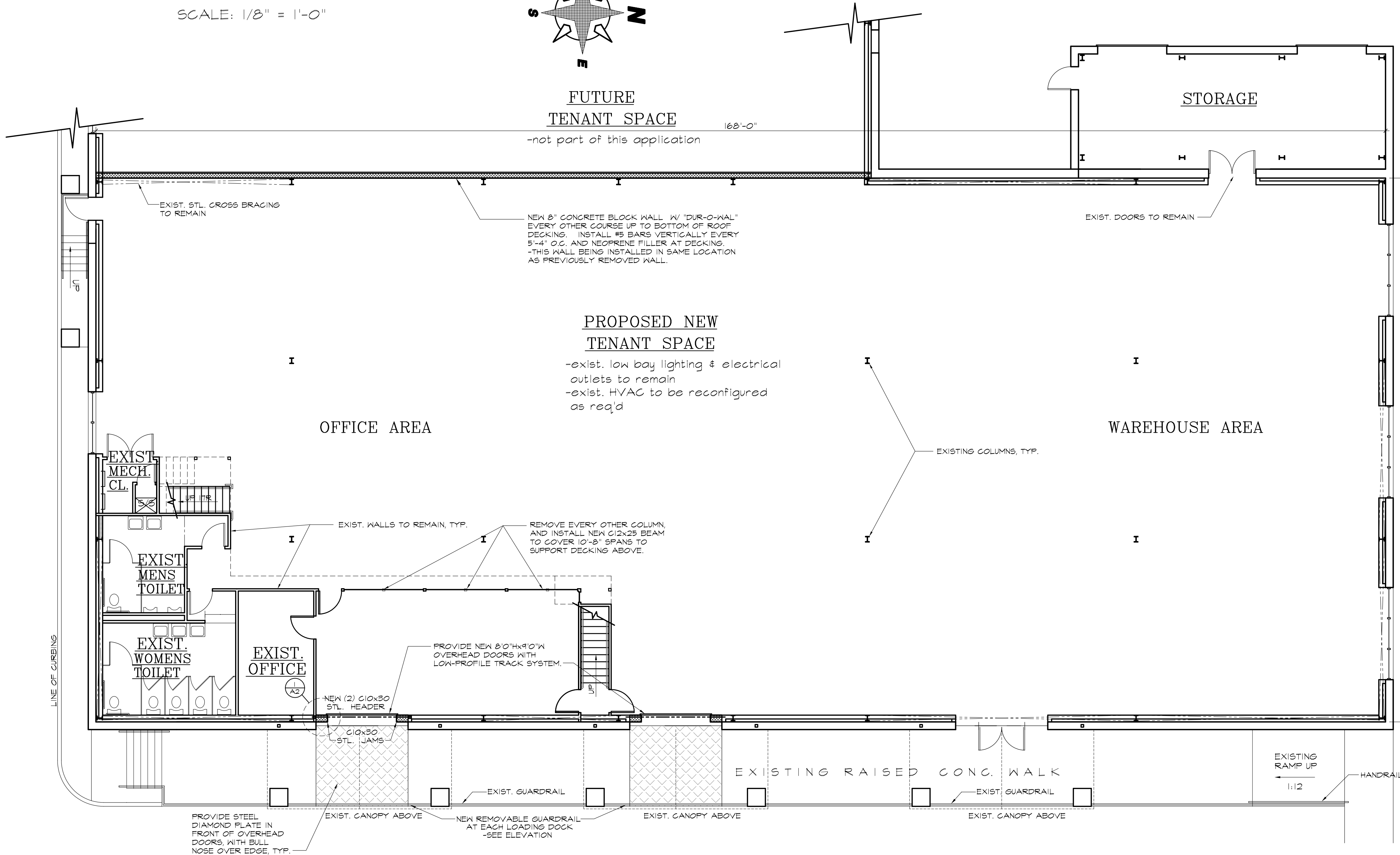
PARTIAL MEZZANINE LEVEL FLOOR PLAN

SCALE: 1/8" = 1'-0"



FUTURE TENANT SPACE

-not part of this application



BUILDING CODE INFORMATION

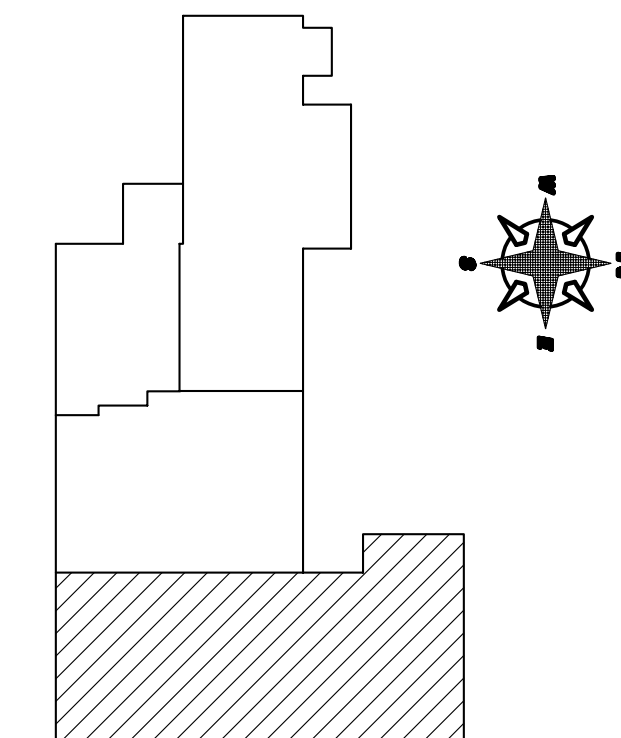
THIS RENOVATION IS BEING SUBMITTED FOR BUILDING PERMITS UNDER THE REHABILITATION SUB CODE OF N.J., THE INTERNATIONAL 2000 BLDG. CODE, N.J. EDITION & THE UNIFORM CONSTRUCTION CODE OF N.J.

USE GROUP:	S-2 (HOSPITAL BED STORAGE)
CONSTRUCTION CLASS:	II, B (FULLY SPRINKLERED)
RENOVATION AREA:	± 7,100 SQ.FT. - WAREHOUSE ± 5,796 SQ.FT. - OFFICE (NON-SEPARATED)
RENOVATION VOLUME:	± 319,052 CU.FT.
BUILDING HEIGHT:	± 29'-0" EXIST.

BLOCK 44 LOT 1

ARCHITECTURAL PLANS
INTERIOR TENANT SPACE RENOVATION
HILLOM / THE ANTON COMPANY
2 CHANGE BRIDGE ROAD
TWP. OF MONTVILLE, MORRIS COUNTY, NEW JERSEY

(978) 484 - 7712
Fox Architectural design
17 ROBERT STREET, WHARTON, NJ 07085



KEY PLAN
NOT TO SCALE

PROPOSED TENANT RENOVATION PLAN

SCALE: 1/8" = 1'-0"

PROJ. NO. 0415
DATE: 10-11-04
DRAWN: sb
SCALE: AS NOTED

THIS DRAWING, NOT VALID UNLESS SIGNED AND SEALED BY ARCHITECT

ARCHITECT'S REGISTER QUALITY
A1
1 OF 2 SHEETS

These plans are instruments of service and may not be altered, reproduced, or copied without prior written consent. Copyright © 2004 - Fox Architectural Design